



# POWER DELIVERED



**GLOBAL ENERGY RENTAL SOLUTIONS**

**APac Energy**



# WHY APAC ENERGY RENTAL?

*FOR ALL YOUR POWER NEEDS ANYTIME,  
ANYWHERE. APAC ENERGY RENTAL IS JUST A  
CALL AWAY. "POWER DELIVERED" THE MOMENT  
YOU MAKE CONTACT.*

## **Our solutions help you focus on your business.**

Although no two solutions are ever the same, you can depend on our experience from installations around the world. APac Energy Rental provides you with the wealth of expertise that only successfully completed installations can provide.

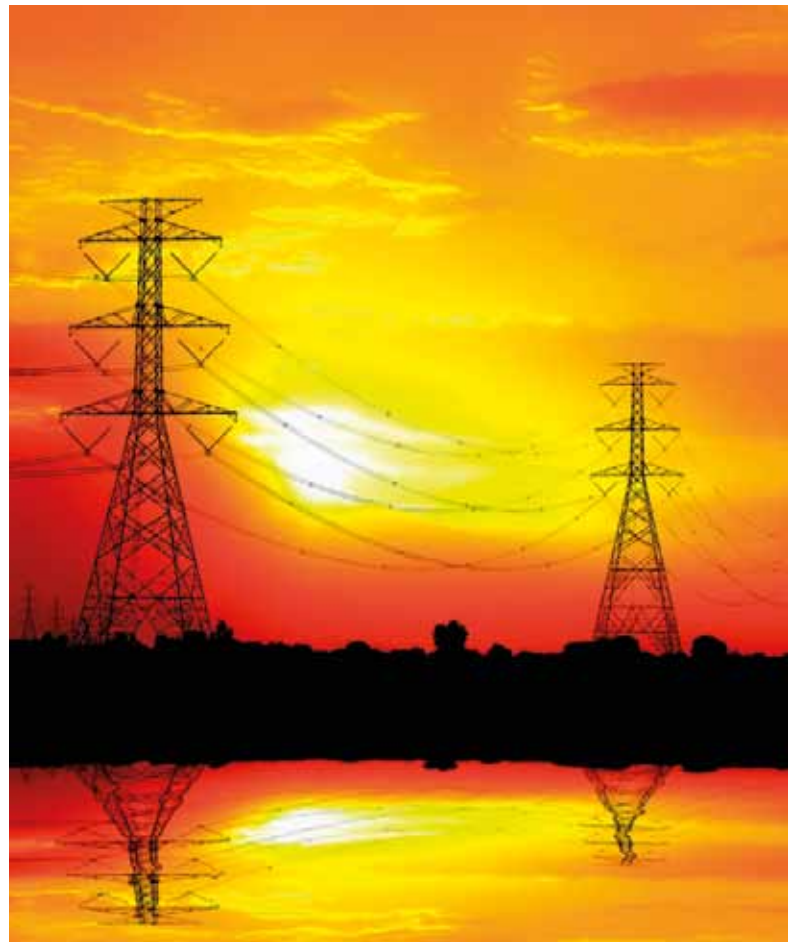
You can rely on APac Energy Rental's comprehensive modern fleet of equipment reinforced with the resources of our global dealer network of some 1500 locations to support your production and improve your bottom line return.

You can trust our global integrated network with Caterpillar® and CAT® Dealers to guarantee a reliable and experienced partner for your temporary power needs.

Our solutions and service support are available 24/7 days a week, 365 days a year.

Our team of engineers, technicians and operations are ready to provide full turnkey support.

**Contact APac Energy Rental to discuss your needs.**



## CATERPILLAR

APac Energy Rental is backed by Caterpillar, the largest manufacturer of construction and mining equipment, diesel, natural gas engines and industrial gas turbines in the world. Caterpillar's organization's products, services and technologies fall into three principal lines of business: Machinery, Engines and Financial Products.

As a global, diverse technology leader, Caterpillar is committed to excellence. They are proud of their role as the leader in building the world's infrastructure and in enabling progress for millions of people around the globe.

**APac Energy is your strategic partner providing comprehensive turnkey solutions for major temporary rental power projects.**

**We operate globally to design, supply, install and operate diesel and gas-fuelled temporary power.**



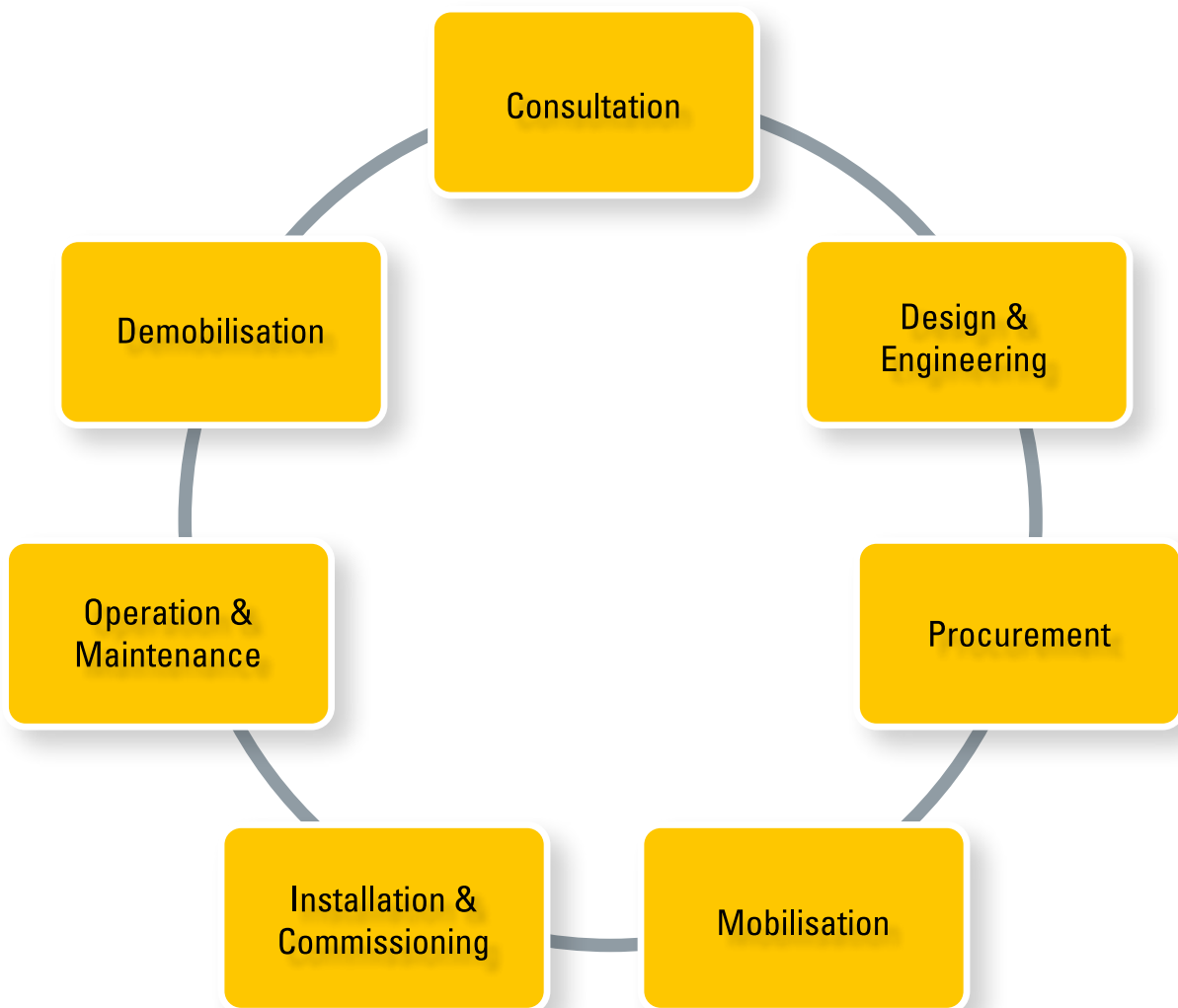
## APAC ENERGY AND THE IPP MARKET

APac Energy Rental is the Caterpillar International Power Projects (IPP) provider of choice to develop temporary power solutions globally to meet the needs of the growing IPP market.

As our valued client, you have immediate access to readily-available, competitively-priced and highly-customized power solutions from Caterpillar supported by partnerships within the extensive Cat dealer network globally.

# THE SOLUTION





- Multi-disciplinary engineering and design team deliver the most reliable and cost-effective power solution that meets your needs.
- Professionally managed equipment procurement & logistics process ensures on-time and on-budget delivery.
- Installation & commissioning by a skilled team, familiar with local and international regulatory requirements.
- Caterpillar trained operations and maintenance staff guarantee reliability and minimise downtime.

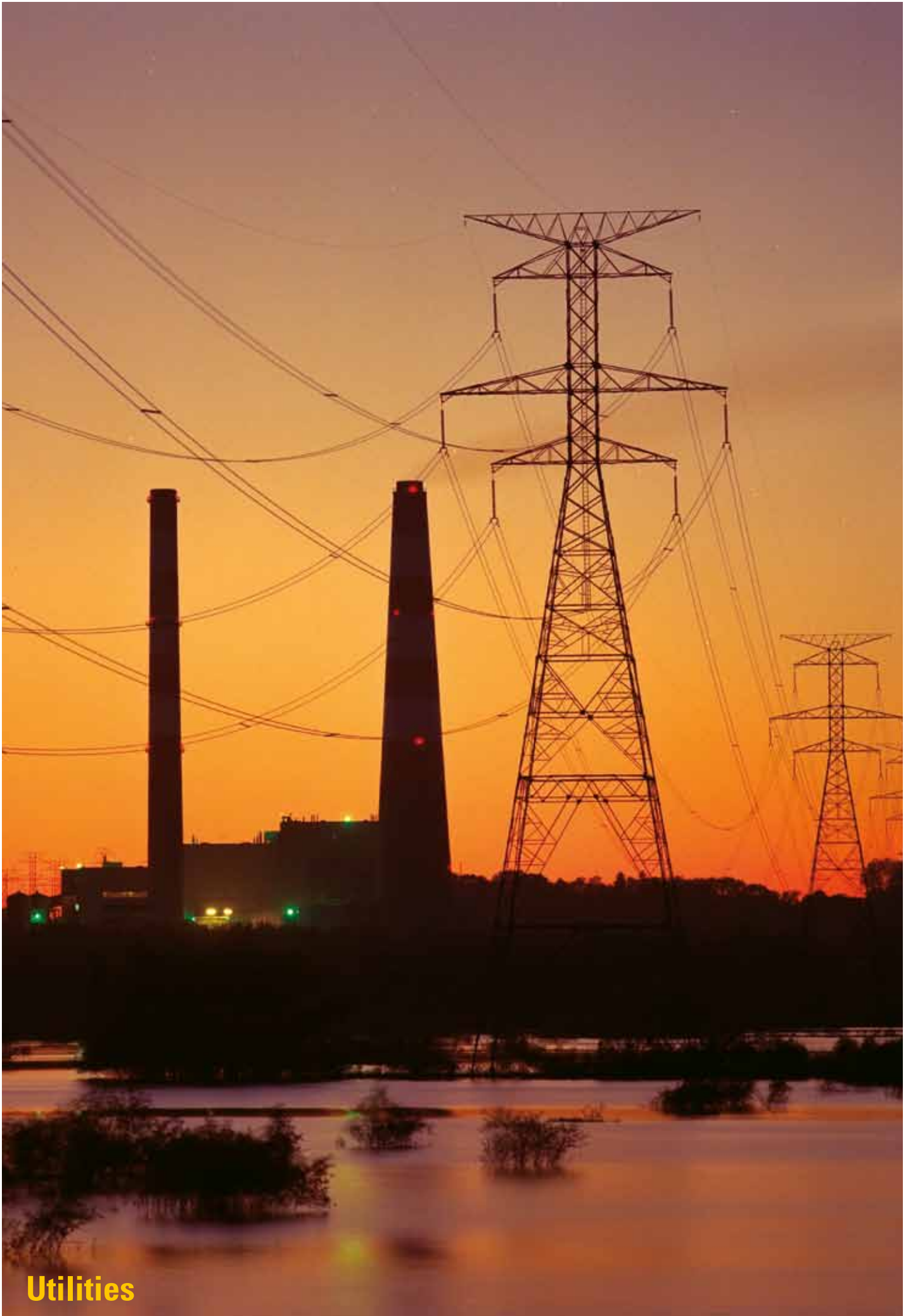




# THE SOLUTION PROVIDER

*APac Energy Rental commits to deliver a full turnkey solution custom-designed to match your specific needs, enabling you to develop and maintain your operations while maximizing your investment.*

***Our solution "Power Delivered".***



**Utilities**





**Oil & Gas**



**Processing**



**Industrial Support Services**



**Engineering, Procurement  
and Construction**

# APAC ENERGY EQUIPMENT

*Designed, engineered and constructed exclusively to meet the most stringent and often harsh operating conditions throughout the globe, our rental power generation fleet is just a call away.*



## Transformer

- Multi tap, Containerized Transformers Designed to meet harsh operating conditions.
- Transformer voltage ratings cover both IEC and ANSI IEEE ranges
- Manufactured and tested according to IEC 60076 and readily compliant to other international standards such as AS (Australia), BS (British), and DIN (German)



## Cables & Accessories

- Complete rental solutions with LV, HV cables, and applicable cable support system



## Fuel tanks & Fuelling systems

- Environmentally friendly double wall construction.
- ISO containers provide ease of mobilization.
- Comes with complete system for loading/unloading fuel.
- Large capacity fuel tanks ensures continuous plant operation.



## Switchgear (Switch room)

- Packaged switchgear c/w fully integrated protective and auxiliary devices to provide faster and efficient power rental
- Switchgear built to comply with IEC 62271 series and ANSI IEEE standards with provision to be able to meet other international standards and type tested by accredited international laboratories

## APac Energy Generator Fleet



### XQ2000

- Proven & Reliable, fuel efficient Cat 3516B engine
- Cat SR4B H class Alternator with Cat Digital Voltage Regulator (CDVR)
- 50Hz or 60Hz operation
- Auto paralleling and loading using package mounted controls.
- CSC certified, Sound attenuated 40' ISO high cube container, provides ease of transport.



### PM1360

- Proven & Reliable, fuel efficient Cat 3512B engine
- Cat SR5 H class Alternator with Cat Digital Voltage Regulator (CDVR)
- 50Hz or 60Hz operation
- Auto paralleling and loading using package mounted controls.
- CSC certified, Sound attenuated 20' ISO high cube container, provides ease of transport.



### XQ1475G

- Cat G3516C spark ignition engine
- CSC certified, Sound attenuated 40' ISO high cube container, provides ease of transport.
- Auto paralleling and loading using package mounted controls.
- This Gas Generator set and components meet or exceed most of the applicable Standards.
- Meets most worldwide emissions requirements down to 250 mg/Nm<sup>3</sup> Nox level without after treatment



### XQ5200

- All-in-one package provides dual fuel solution (diesel and gas)
- Includes integrated high voltage switchgear inside a dedicated control room and provision of an auxiliary transformer and optional neutral earthing resistor cuts down engineering and installation works significantly
- Robust and yet simple to assemble and commission with high voltage connection points readily accessible for cable installation

# APac Energy Rental

## Head Office:

26 Benoi Sector  
Singapore 629858  
T +65 6515 2036  
F +65 6265 2716

## Regional Offices:

### PERTH

3/46 Pavers Circle,  
Malaga WA 6090  
Australia  
T +61 08 9249 4449  
F +61 08 9249 4429

### DUBAI

4th Floor  
3rd East Wing Building  
Dubai Airport Free Zone  
Dubai  
U.A.E  
T +971 4214 9519  
F +971 4214 9501

### HONG KONG

15/F, 100 Queens Road Central  
Central, Hong Kong  
T +852 2824 8807  
F +852 3180 9399

### SHANGHAI

5th Floor, 989 Hu Qing Ping Road  
Minhang District,  
Shanghai 201105  
P.R. China  
T +86 21 6127 7622  
F +86 21 6127 7633

### MANILA

18/F, Philamlife Tower  
8767 Padeo de Roxas  
Makati City Metro 1226  
Philippines  
T +63 2 814 9578  
F +63 2 830 8489

[enquiry@apacenergy.com](mailto:enquiry@apacenergy.com)  
[www.apacenergy.com](http://www.apacenergy.com)